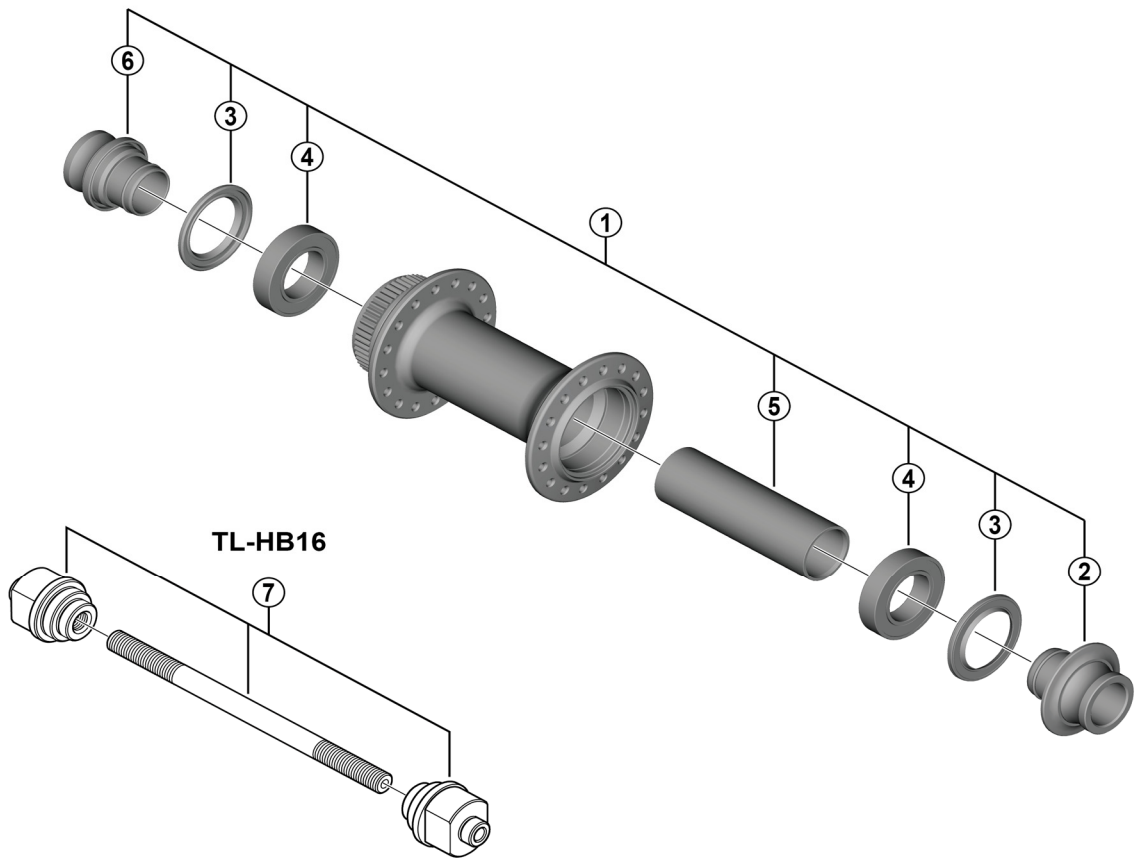


Front Hub (For Disc Brake)

HB-TC500-15    HB-TC500-12  
HB-TC500-15-B



• O.L.D.  
100 mm for HB-TC500-15 / HB-TC500-12  
110 mm for HB-TC500-15-B

ITEM NO.	SHIMANO CODE NO.	DESCRIPTION	INTERCHANGEABILITY			
			HB-MT410-B	HB-MT410	HB-MT400-B	HB-MT400
1	Y2GX98010	Complete hub unit for HB-TC500-15		A		
	Y2GY98010	Complete hub unit for HB-TC500-15-B	A			
	Y2MC98010	Complete hub unit for HB-TC500-12		A		
2	Y2GY98020	Right axle cap for HB-TC500-15 / HB-TC500-15-B	A	A		
	Y2MC98020	Right axle cap for HB-TC500-12				
3	Y27X14000	Seal ring	A	A	A	A
4	Y2GY25000	Sealed cartridge bearing (17 x 30 x 7)	A	A		
5	Y2GX22000	Bush for HB-TC500-15 / HB-TC500-12		A		
	Y2GY22000	Bush for HB-TC500-15-B	A			
6	Y2GY98030	Left axle cap for HB-TC500-15 / HB-TC500-15-B	A	A		
	Y2MC98030	Left axle cap for HB-TC500-12				
7	Y20W98020	TL-HB16 Hub setting tool	A	A	A	A

A: Same parts.

B: Parts are usable, but differ in materials, appearance, finish, size, etc.

Absence of mark indicates non-interchangeability.

May-2024-5044A

© Shimano Inc. I

Specifications are subject to change without notice.

SHIMANO