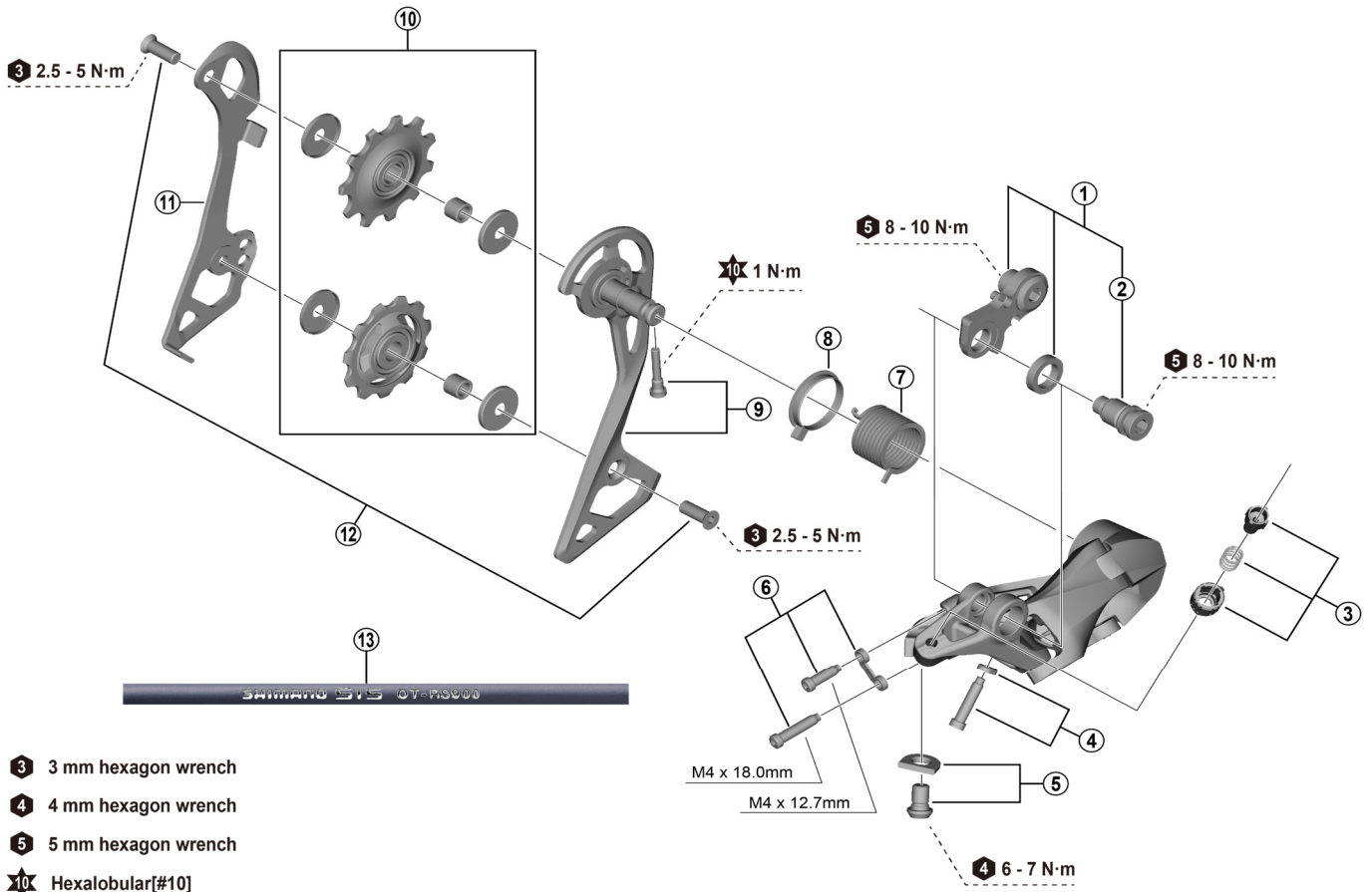


SHIMANO 105 Rear Derailleur (11-speed)

RD-R7000-GS Black / Silver



- ③ 3 mm hexagon wrench
- ④ 4 mm hexagon wrench
- ⑤ 5 mm hexagon wrench
- ⚙ Hexalobular[#10]

RD-R7000-GS

ITEM NO.	SHIMANO CODE NO.	DESCRIPTION	INTERCHANGEABILITY
* 1	Y3HY98020	Bracket axle unit	
* 2	Y3HY9801T	Bracket axle	
3	Y3F398030	Cable adjustment barrel unit	B
4	Y3E998040	End adjusting screw (M4 x 18) and plate	A
5	Y3F398040	Cable fixing screw and plate	A
6	Y3E998060	Stroke adjusting screws and plate	A
7	Y5PV17000	Plate tension spring	A
8	Y5PV24000	P-Seal ring	A
9	Y3F398060	Outer plate and retaining screw	
10	Y3F398010	Tension and guide pulley set	B
11	Y3F316000	Inner plate	B
12	Y5V598140	Pulley screw (2 pcs.)	A
13	Y0BM98011	OT-RS900 (black) 240 mm x 10 pcs. (with sealed outer cap and outer cap with long tongue)	A
	Y0BM98021	OT-RS900 (white) 240 mm x 10 pcs. (with sealed outer cap and outer cap with long tongue)	A
	Y0BM98031	OT-RS900 (red) 240 mm x 10 pcs. (with sealed outer cap and outer cap with long tongue)	A
	Y0BM98041	OT-RS900 (high-tech gray) 240 mm x 10 pcs. (with sealed outer cap and outer cap with long tongue)	A

A: Same parts.

B: Parts are usable, but differ in materials, appearance, finish, size, etc.

Absence of mark indicates non-interchangeability.

Specifications are subject to change without notice.

Torque information is listed.

Jan.-2024-4338B

© Shimano Inc. I

SHIMANO