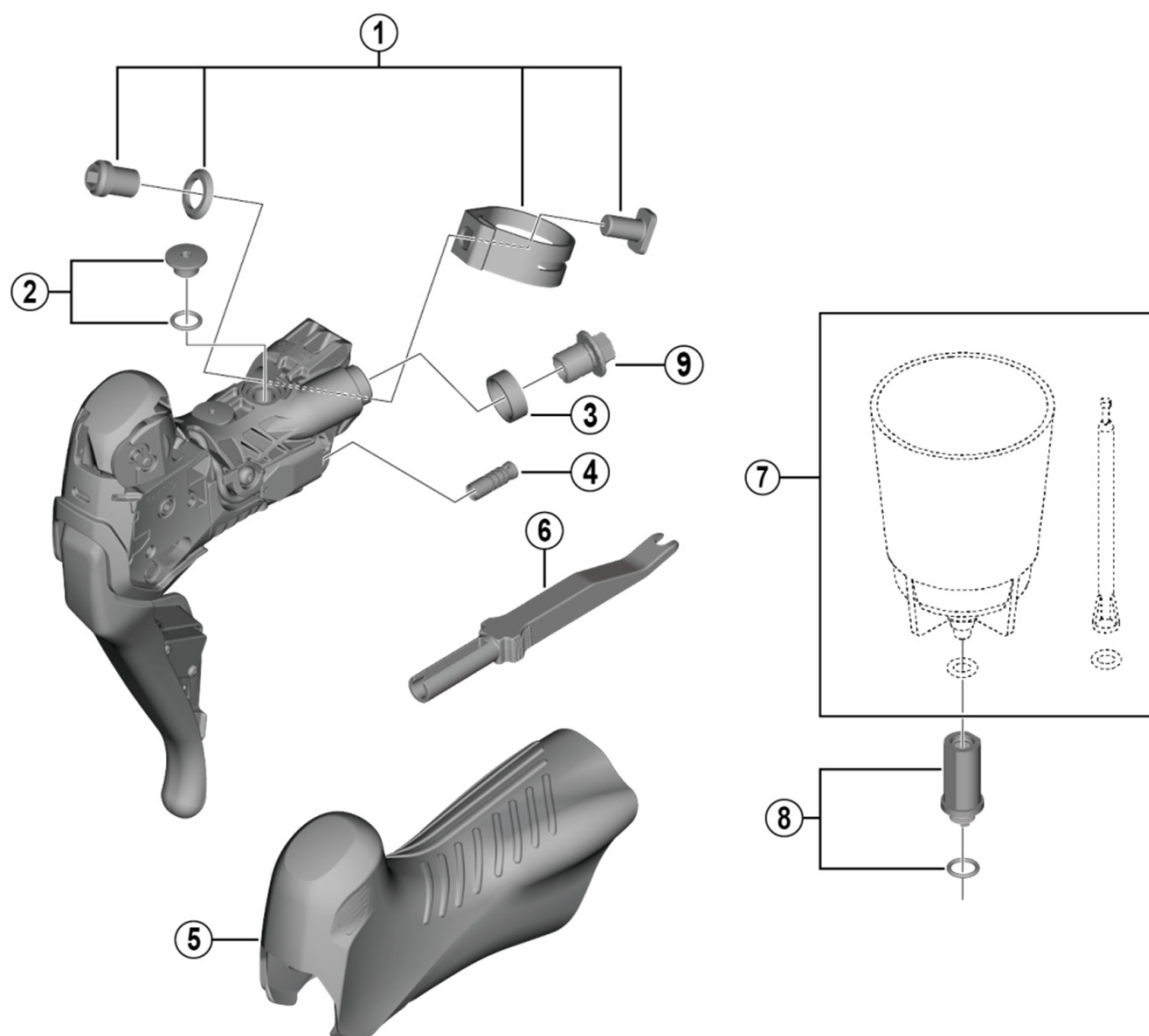


## GRX Dual Control Lever (For Disc Brake)

**ST-RX815** (2x11-speed)

ITEM NO.	SHIMANO CODE NO.	DESCRIPTION
* 1	<b>Y0JM98020</b>	Clamp band unit diameter (23.8 mm - 24.2 mm)
2	<b>Y0F398030</b>	Bleed screw and O-ring
3	<b>Y0C514000</b>	Joint support ring
4	<b>Y6VE15000</b>	Dummy plug
5	<b>Y0JM98010</b>	Bracket covers (pair)
6	<b>Y6VE16000</b>	TL-EW02 Plug tool
7	<b>ESMDISCBP</b>	Funnel and oil stopper
8	<b>Y0C698050</b>	Funnel adapter and O-ring
9	<b>Y8RD02000</b>	Flange flare nut (M9/black)

Jul.-2021-4594B  
© Shimano Inc. I

Specifications are subject to change without notice.

**SHIMANO**