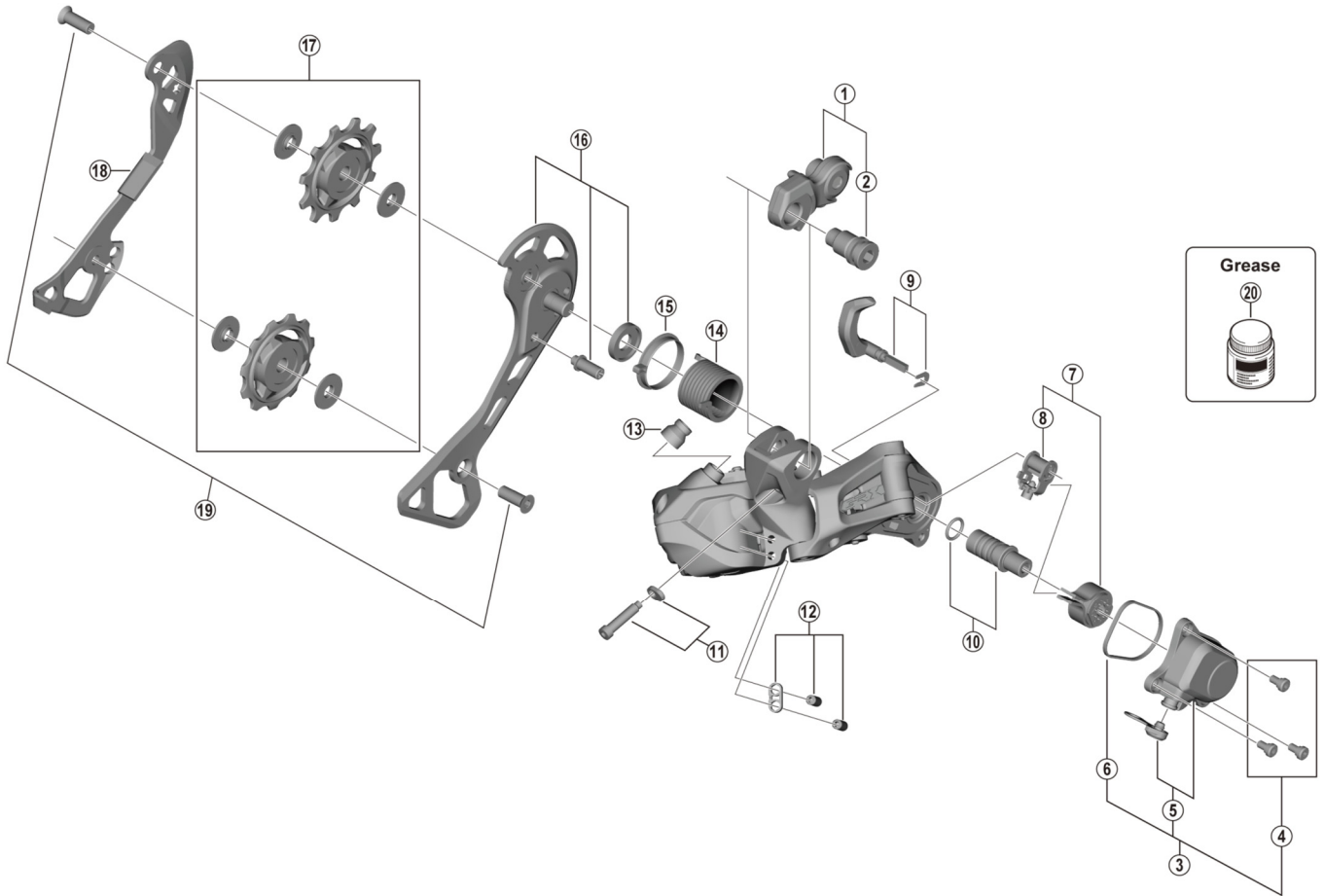


# GRX Rear Derailleur RD-RX817 (11-speed)



| ITEM NO. | SHIMANO CODE NO. | DESCRIPTION                           |
|----------|------------------|---------------------------------------|
| 1        | Y3FC98010        | Bracket axle unit                     |
| 2        | Y3E958000        | B-axle 2                              |
| 3        | Y3HT98020        | P-cover unit                          |
| 4        | Y5Y198070        | P-cover screw set (3 pcs.)            |
| 5        | Y3HT98030        | P-cover and cap                       |
| 6        | Y5ZN00031        | P-cover packing                       |
| 7        | Y3HT98040        | Stabilizer unit                       |
| 8        | Y3HT98050        | Cam unit                              |
| 9        | Y3HT98060        | Switch lever unit and fixing plate    |
| 10       | Y3HT98070        | P-axle and O-ring                     |
| 11       | Y3E998040        | End adjusting screw and plate         |
| 12       | Y5ZN98060        | Stroke adjusting screws and plate     |
| 13       | Y5PU130Y0        | Boot cover                            |
| 14       | Y5PU13100        | P-tension spring                      |
| 15       | Y5PU130T0        | P-seal ring                           |
| 16       | Y3HT98080        | Outer plate assembly                  |
| * 17     | Y3E998010        | Tension and guide pulley set          |
| 18       | Y5ZN00080        | Inner plate                           |
| 19       | Y3HR98050        | Pulley screw (2 pcs.)                 |
| 20       | Y04121000        | New grease for stabilizer (Net. 50 g) |

Oct.-2021-4592B  
© Shimano Inc. I

Specifications are subject to change without notice.

# SHIMANO