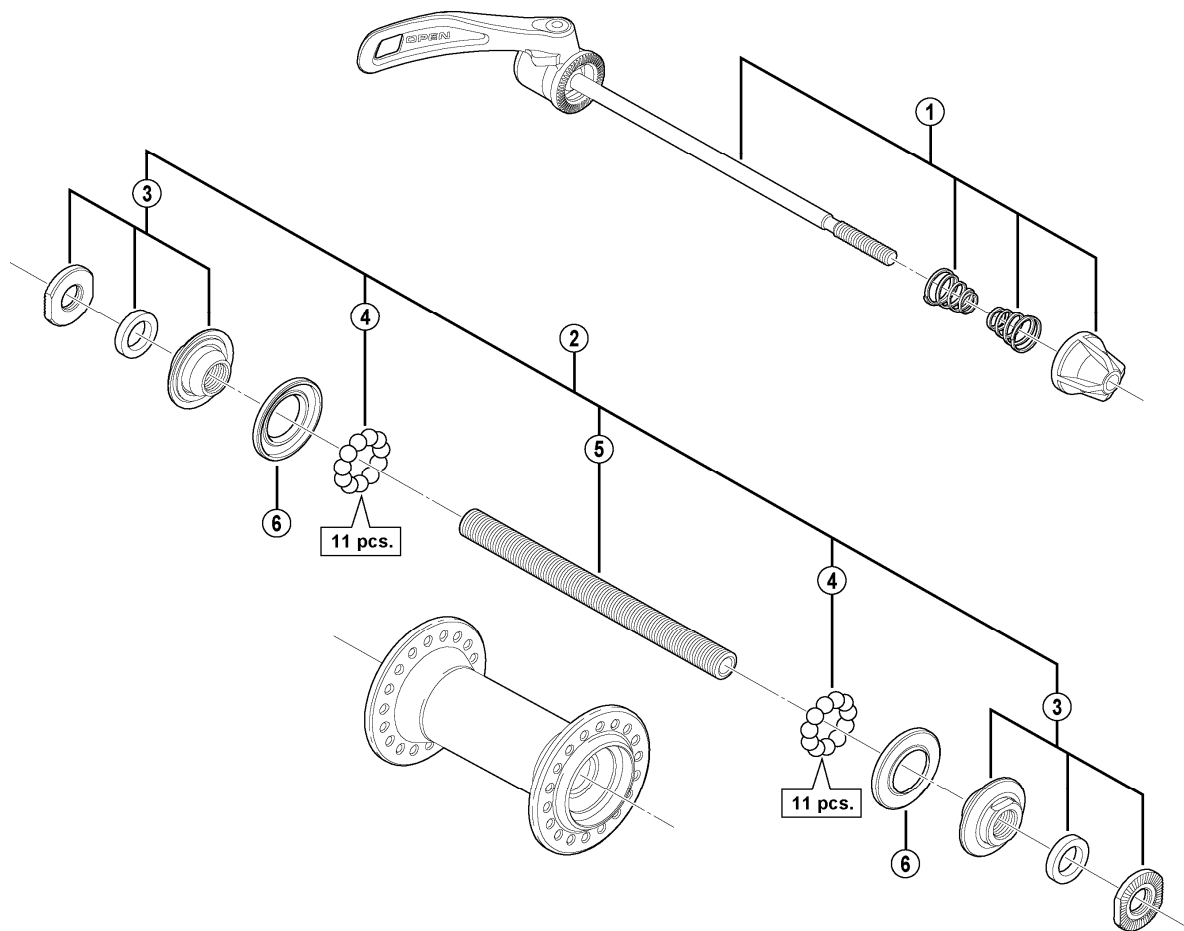


SHIMANO Front Hub  
**HB-M430-S** Silver Version  
**HB-M430-L** Black Version



HB-M590  
HB-T660

ITEM NO.	SHIMANO CODE NO.	DESCRIPTION	INTERCHANGEABILITY		
1	Y2TZ98010	Complete Quick Release 133 mm (5-1/4")			
2	Y2TZ98020	Complete Hub Axle 108 mm (4-1/4")			
3	Y2TZ98030	Lock Nut Unit			
4	Y4BB98030	Steel Ball (3/16") 22 pcs.	A	A	
5	Y21C03100	Hub Axle M9 x 108 mm (4-1/4")	A		
6	Y2TA06000	Seal Ring	A	A	

A: Same parts.  
B: Parts are usable, but differ in materials, appearance, finish, size, etc.  
Absence of mark indicates non-interchangeability.

Feb.-2010-3007  
© Shimano Inc. A

Specifications are subject to change without notice.

**SHIMANO**