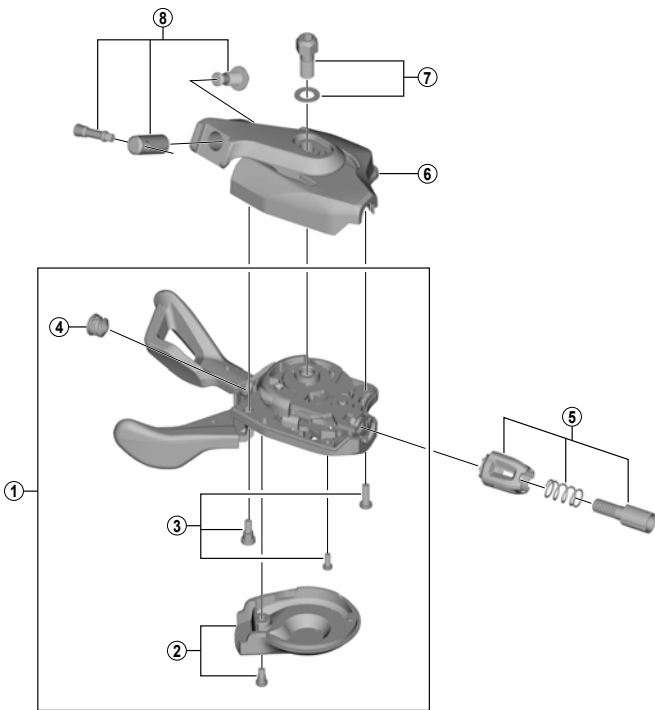


SLX Rapidfire Plus Lever

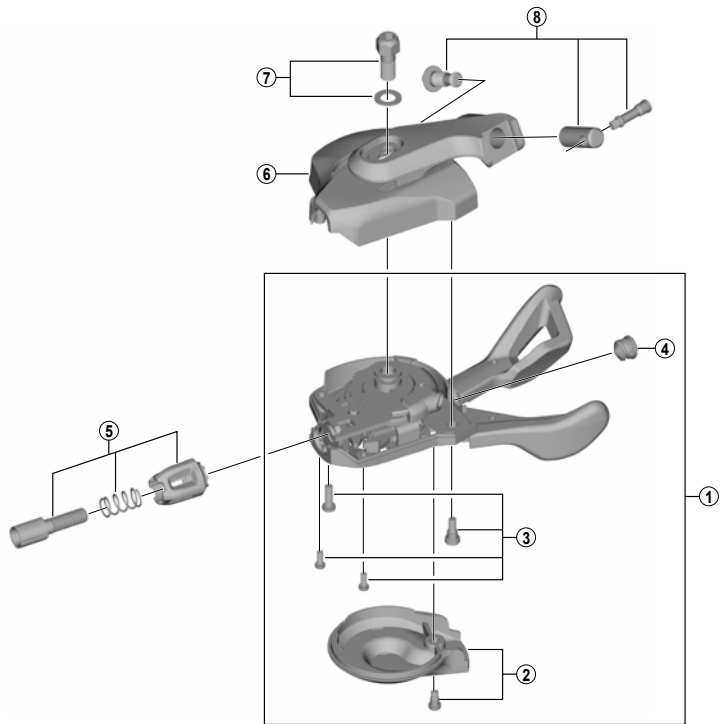
SL-M7000-B-I-11 I-spec B-type (3/2x11-speed)

SL-M7000-B-I-10 I-spec B-type (3/2x10-speed)

For Left Hand



For Right Hand



SL-M7000

ITEM NO.	SHIMANO CODE NO.	DESCRIPTION	INTERCHANGEABILITY
1	Y06M98080	R.H. Shifting Lever Unit for SL-M7000-I-11	
	Y06P98050	R.H. Shifting Lever Unit for SL-M7000-I-10	
	Y06N98090	L.H. Shifting Lever Unit for SL-M7000-I-L	
2	Y06M98020	R.H. Main Lever Cover for SL-M7000-11 & Fixing Screw	
	Y06P98020	R.H. Main Lever Cover for SL-M7000-10 & Fixing Screw	
	Y06N98020	L.H. Main Lever Cover & Fixing Screw	
3	Y6VT98020	R.H. Base Cover Fixing Screw Unit	
	Y06N98100	L.H. Base Cover Fixing Screw Unit	
4	Y6CD33000	Inner Hole Cap	A
	Y03K98030	R.H. Cable Adjusting Bolt Unit	
5	Y06N98040	L.H. Cable Adjusting Bolt Unit	A
	Y06M98110	R.H. Bracket Unit for SL-M7000-B-I-11	
6	Y06P98070	R.H. Bracket Unit for SL-M7000-B-I-10	
	Y06N98120	L.H. Bracket Unit for SL-M7000-B-I-L	
7	Y06M98100	Unit Fixing Bolt (M5) & Washer	
* 8	Y00398050	Integration Bolt Unit	

A: Same parts.

B: Parts are usable, but differ in materials, appearance, finish, size, etc.

Absence of mark indicates non-interchangeability.

Specifications are subject to change without notice.

Dec.-2016-4034A

© Shimano Inc. I

SHIMANO