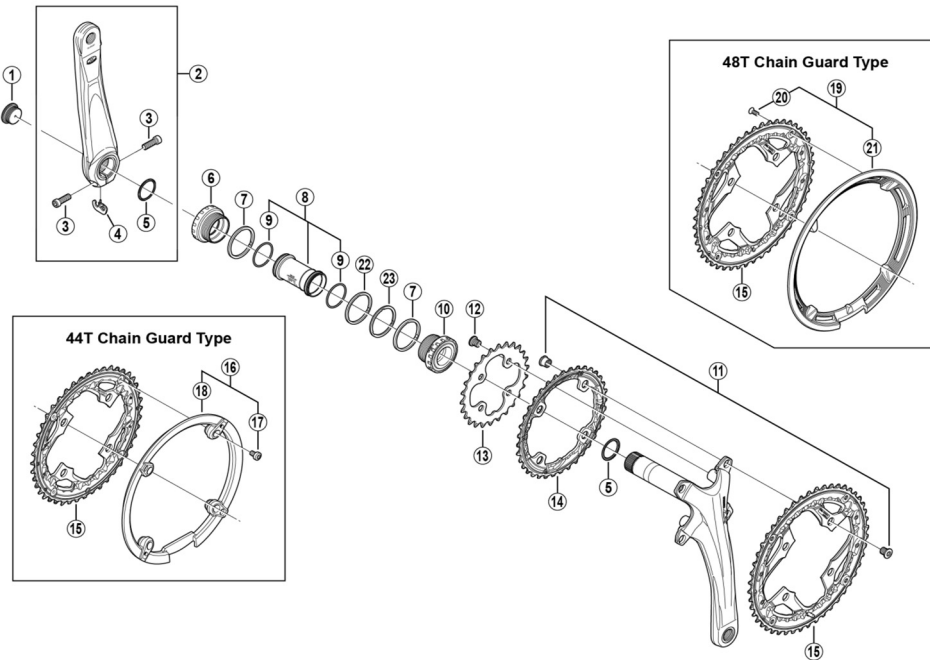


# DEORE LX Front Chainwheel FC-T671



• Chaining teeth combinations: 44-32-24T / 48-36-26T

• Bolt circle diameter: 104 mm...(For outer gear and middle gear), 64 mm...(For inner gear)

ITEM NO.	SHIMANO CODE NO.	DESCRIPTION	INTERCHANGEABILITY	
			FC-T781(48T)	FC-T781(44T)
1	Y1KS13000	Crank Arm Fixing Bolt		
2	Y1NJ98010	Left Hand Crank Arm 170 mm (Silver)		
	Y1NJ98020	Left Hand Crank Arm 170 mm (Black)		
	Y1NJ98030	Left Hand Crank Arm 175 mm (Silver)		
	Y1NJ98040	Left Hand Crank Arm 175 mm (Black)		
* 3	Y1GS21000	Clamp Bolt with Washer (M6 x 21)		
4	Y1GE98050	Plate		
5	Y1F316000	Ring	A	A
6	Y1J198080	Left Hand Adapter (B.C.1.37" x 24T) English Thread (SM-BB70)	A	A
7	Y1F813000	Spacer (2.5 mm)	A	A
8	Y1E598210	Inner Cover & O-Ring	A	A
9	Y1TF21000	O-Ring	A	A
10	Y1J198090	Right Hand Adapter (B.C.1.37" x 24T) English Thread (SM-BB70)	A	A
11	Y1N998030	44-32T Double Gear Fixing Bolt (TORX®**/M8 x 8.5) & Nut (4 sets)		B
	Y1N998040	48-36T Double Gear Fixing Bolt (TORX®**/M8 x 8.5) & Nut (4 sets)		B
* 12	Y1NV98040	Inner Gear Fixing Bolt (TORX®**/M8 x 8.5 / 4 pcs.)	A	A
13	Y1LU24000	Chainring 24T-AE		B
	Y1KS26000	Chainring 26T	B	
14	Y1N998050	Chainring 32T-AE		B
	Y1MP98020	Chainring 36T-AL	A	
15	Y1NJ98050	Chainring 44T-AE (Silver)		B
	Y1NJ98060	Chainring 44T-AE (Black)		B
	Y1NJ98070	Chainring 44T-AE (Silver) for Chain Guard		B
	Y1NJ98080	Chainring 44T-AE (Black) for Chain Guard		B
	Y1NJ98090	Chainring 48T-AL (Silver)	B	
	Y1NJ98100	Chainring 48T-AL (Black)	B	
	Y1NJ98110	Chainring 48T-AL (Silver) for Chain Guard	B	
	Y1NJ98120	Chainring 48T-AL (Black) for Chain Guard	B	
16	Y1MP98070	44T Chain Guard & Fixing Bolts		A
17	Y1CY98020	44T Chain Guard Fixing Bolt (4 pcs.)		A
18	Y1MP12100	44T Chain Guard		A
19	Y1NJ98130	48T Chain Guard & Fixing Bolts	B	
20	Y1D298010	48T Chain Guard Fixing Bolt (4 pcs.)	A	
21	Y1NJ13000	48T Chain Guard	B	
22	Y1F813100	Spacer (1.8 mm)	A	A
23	Y1F813110	Spacer (0.7 mm)	A	A

A: Same parts.

B: Parts are usable, but differ in materials, appearance, finish, size, etc.

Absence of mark indicates non-interchangeability.

\*\* TORX is a registered trademark of Camcar LLC.

Jan.-2018-3311B

© Shimano Inc. I

Specifications are subject to change without notice.

# SHIMANO